

**Committee Management (J2EE)
Use Case Specification: Copy Roster**

Version 1.4

Prepared By:

Logicon / ROW Sciences
1700 Research Blvd
Suite 400
Rockville MD 20850-3142

Prepared For:

The National Institutes of Health
Office of Extramural Research
6705 Rockledge Drive
Rockville MD 20817

REVISION HISTORY

<i>Date</i>	<i>Version</i>	<i>Description of Change</i>	<i>Author</i>
4/17/02	1.0	Shell for KC	C Blizard
4/21/02	1.1	Initial Draft	K Collie
5/08/02	1.2	Update activity diagram, data spec and textual flow based on feedback from initial draft.	K Collie
5/17/02	1.3	Updated based on comments from team.	K Collie
06/20/02	1.4	Updated based on comments from cdr.	K Collie

TABLE OF CONTENTS

1	Brief Description	4
2	Pre-Conditions	4
3	Flow of Events.....	4
3.1	Textual Flow.....	5
3.2	Alternative Flows.....	5
4	Data Specifications	5
4.1	Roster Details Elements	6
5	Post-Conditions	7
6	Special Requirements	7
6.1	Data Validation.....	7
6.2	Algorithms	8
6.3	Sample Screen	9

1 BRIEF DESCRIPTION

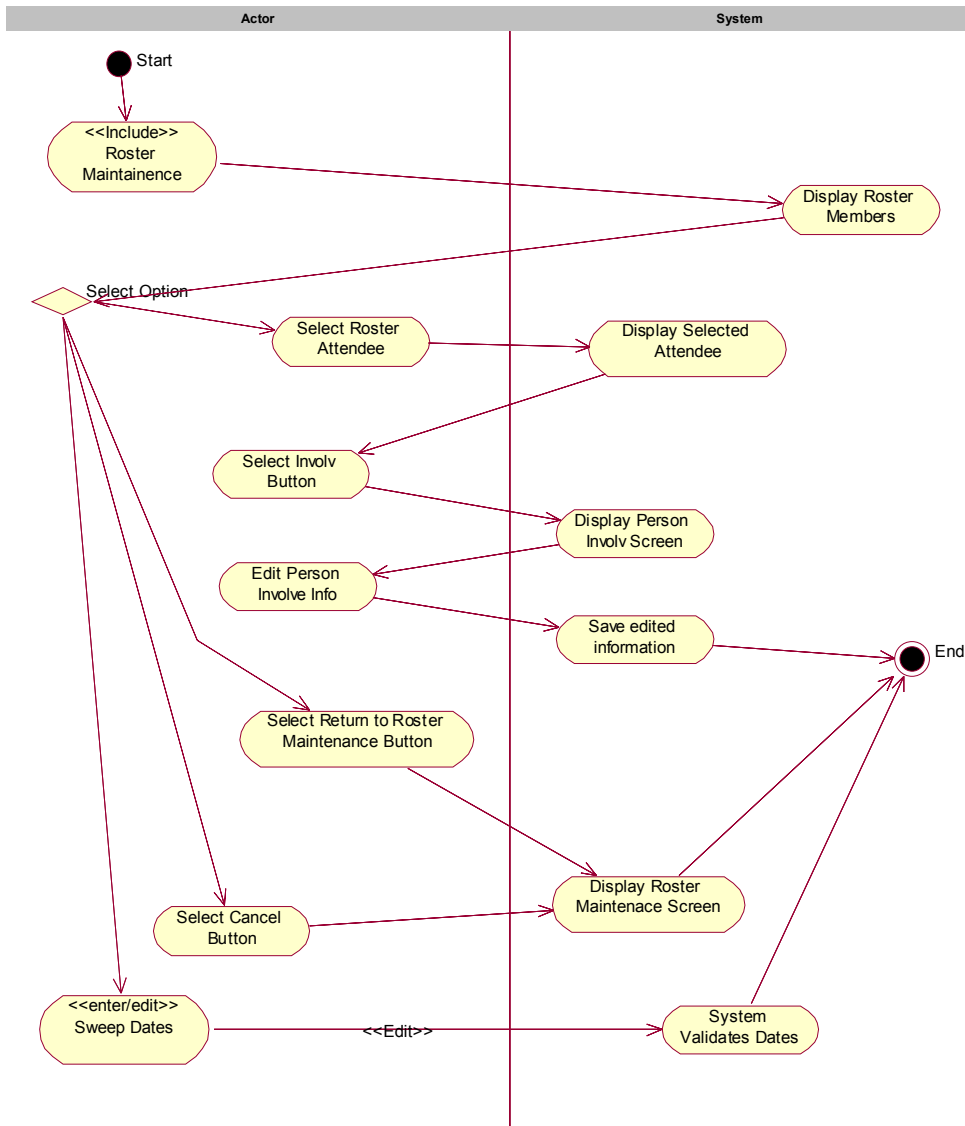
The Copy Roster Use Case Specification unambiguous business goal is to provide the users with the ability to copy roster members from previous rosters so that they can use these members on the current meeting roster that they are building.

2 PRE-CONDITIONS

Use Case Specification: Maintain Meetings.

3 FLOW OF EVENTS

3.1 Activity Diagrams



3.2 Textual Flow

1. Access the Roster Maintenance Option. The system displays the Committee Details Elements (See the Common Use Case Components document Data Specifications), the Meeting Details Elements (See the Common Use Case Components document Data Specifications) and the Roster Details Repeating Elements.
2. User enters query parameters for a meeting.
3. System returns meetings for query parameters entered.
4. User select roster members

3.3 Alternative Flows

3.3.1 Person Involvement

1. <<Include>> Person Involvement
2. Display Person Involvement Screen

3.3.2 Sweep Dates

1. Sweep Dates, system validates the dates entered.

3.3.3 Query Meeting

1. Display Query Meeting screen.

3.3.4 Sys ID's

1. Display Sys ID's.

4 DATA SPECIFICATIONS

4.1 Committee View Elements –

See the Common Use Case Components, Data Specifications

4.2 Meeting View Elements –

See the Common Use Case Components, Data Specifications

4.3 System IDs Data Elements –

See Common Use Case Components, Data Specifications

4.4 Roster Details Elements

Element name	Description	Formatting	Edits	Data Conversion
Table/Column Name				
Sel	Allows user to select or unselect a meeting attendee.	Checkbox	Optional.	N/A
N/A				
Err	Indicates if the meeting attendee is missing any required data for the roster.	Checkbox	Display Only.	N/A
N/A				
Name	Name of meeting attendee.	Character (25). Last Name, First Name, Middle Initial	Display Only. (Name Formatting - see Common Use Case Components, Algorithms)	N/A
Mrstprsn.last_name, mrstprsn.first_name, mrstprsn.mi_name				
Type	Indicates the type of the attendee, i.e., Standing Member, Non-Standing Member, etc.	Char (1)	Display Only.	N/A
Mrstprsn.attendee_type_code				
Role	Indicates the role of the attendee, i.e., Chair, GM Rep, etc.	Char (10)	Display Only.	N/A
Attendee_roles_t.descrip (mrstprsn.attendee_role_code)				
Class	Indicates the classification of the attendee, i.e., Regular, etc.	Char (10)	Display Only.	N/A
Mrstprsn.attendee_classification_code				
State	The state where the institution is located.	Char (2)	Display Only.	N/A
See "Common Use Case Components, Algorithms, Get Institution State".				
Institution	The institution where the attendee is employed.	Char (20)	Display Only.	N/A
See "Common Use Case Components, Algorithms, Get Institution Name".				
Title	Indicates if the title has been entered.	Char (1)	Display Only, {* - Missing data Y - data present}	N/A
See "Common Use Case Components, Algorithms, Title Exists".				
Ros	Indicates if the preferred roster address has been entered.	Char(1)	Display Only, {* - missing data, Y - data present}	N/A

Element name	Description	Formatting	Edits	Data Conversion
Table/Column Name				
See "Common Use Case Components, Algorithms, Roster Address Exists".				
Deg	Indicates if a degree has been entered.	Char(1)	Display Only, {* - Missing data, Y – data present} (Degree Formatting – see Common Use Case Components, Algorithms)	N/A
See "Common Use Case Components, Algorithms, Degree Exists".				
Eth	Indicates if ethnicity has been entered.	Char (1)	Display Only, {- Missing data, Y – data present}	N/A
See "Common Use Case Components, Algorithms, Ethnicity Flag".				
Race	Indicates if race information has been entered.	Char (1)	Display Only, {* - Missing data, Y – attendee is a minority}	N/A
See "Common Use Case Components, Algorithms, Race Flag".				
Fem	Indicates if gender information has been entered.	Char (1)	Display Only, {* - Missing data, Y – indicates the person is a female}	N/A
See "Common Use Case Components, Algorithms, Female Flag".				
SSN	Indicates if the social security number has been entered.	Char (1)	Display Only, {* - Missing data, Y – data present}	N/A
See "Common Use Case Components, Algorithms, SSN Flag".				
Coded Exp	Indicates if the coded expertise has been entered.	Char (1)	Display Only, {* - Missing data, Y – data present}	N/A
See "Common Use Case Components, Algorithms, Coded Expertise Exists".				

5 POST-CONDITIONS

5.1 Roster is copied.

6 SPECIAL REQUIREMENTS

6.1 Data Validation

None.

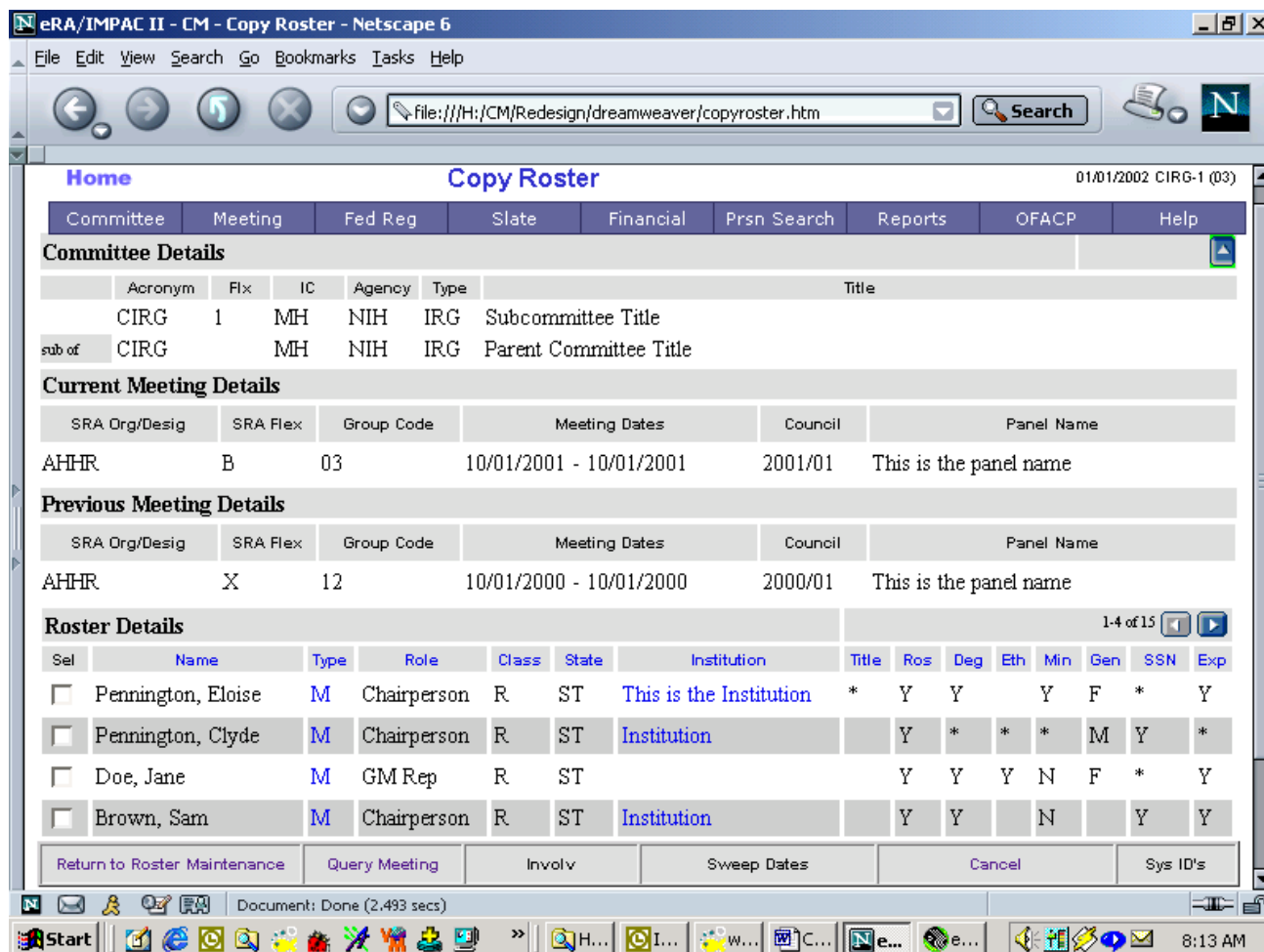
6.2 Algorithms

None.

6.3 Other Requirements

None.

6.4 Sample Screen



6.4.1 Copy Roster Buttons

- Return to Roster Maintenance – Navigate to Roster Maintenance Screen
- Query Meeting – Navigate to Query Meeting Screen
- Involv – Navigate to Person Involvement Screen
- Sweep Dates – System sweeps dates
- Cancel - Navigate to Roster Maintenance Screen
- Sys ID's – Navigate to Sys ID's screen